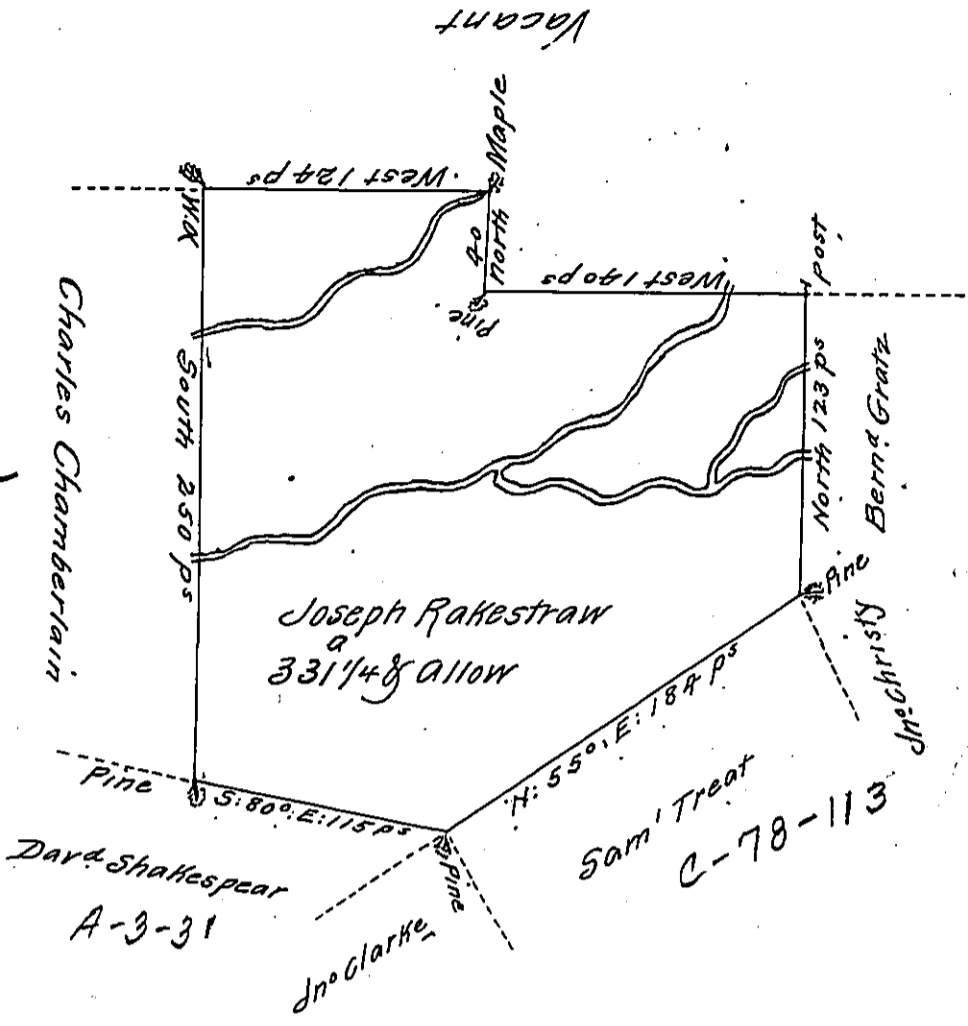


C-36-115



A Draught of a Tract of Land Called _____ Situate on the Waters of Shamokin Creek adjoining Land Surveyed for Samuel Treat, John Clark & others in the County Northumberland, Containing three hundred and thirty One Acres & a quarter of an Acre besides the usual allowance of Six p Cent for Roads &^{ta} Surveyed the 14th Day of Jan^y 1776 for Joseph Rakestraw. In pursuance of a Warrant Dated the 21st day of January 1773.

by Chas^s Stewart Dep Sur^t

To John Lukens Esq^r Survey^r Gen^l

IN TESTIMONY that the above is a copy of the original remaining on file in the Department of Internal Affairs of Pennsylvania, made conformably to an Act of Assembly approved the 16th day of February, 1833, I have hereunto set my Hand and caused the Seal of said Department to be affixed at Harrisburg, this Third day of August 1910

Henry Houck
Secretary of Internal Affairs.